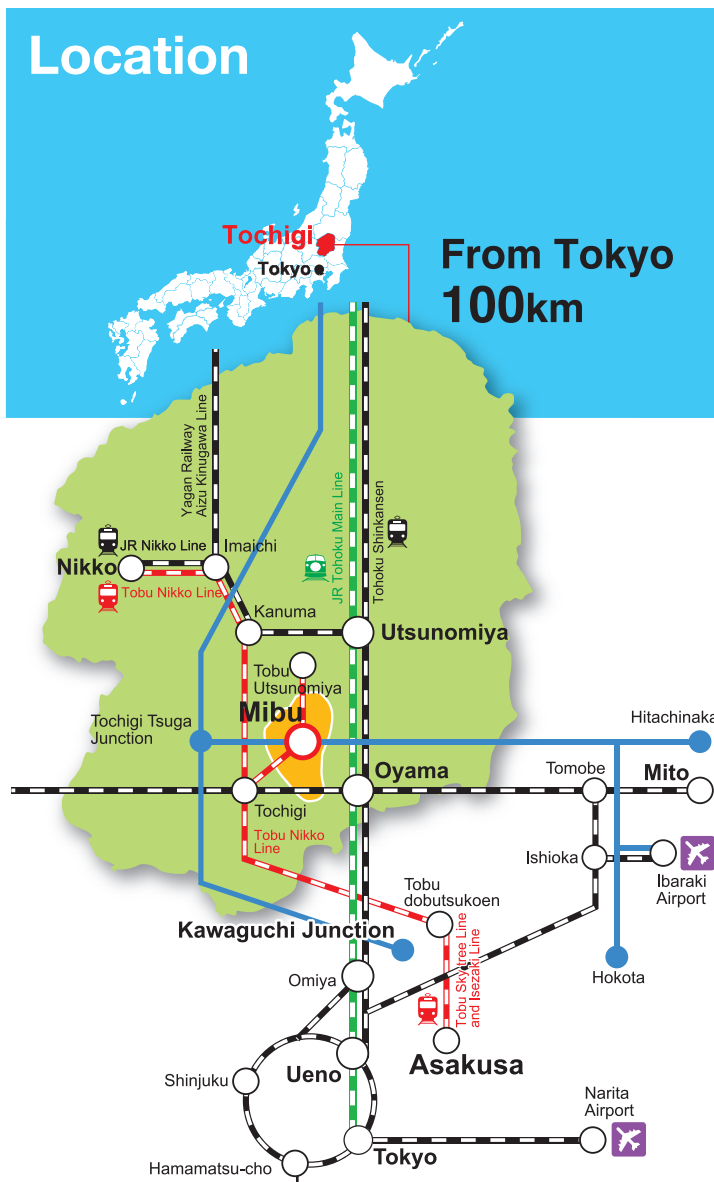


## Location



## Access

### From the airport

※Express bus is available

**Access 1**  
Haneda or Narita Airport → Express bus → JR Utsunomiya Line → Ishibashi → Yugao Bus → Omochanomachi

**Access 2**  
Narita Airport → Express bus → JR Utsunomiya → Kanto Transportation → Tobu Utsunomiya Line → Yasuzuka / Omochanomachi / Kuniya / Mibu

**Access 3**  
Haneda → Express bus → Tobu Utsunomiya → Tobu Utsunomiya Line → Yasuzuka / Omochanomachi / Kuniya / Mibu

**Access 4** ※Express bus is not available  
Ibaraki Airport → Connecting Bus or taxi → JR Ishioka → JR Tomobe → JR Mito Line → JR Oyama → JR Ryomo Line → JR Tochigi → Tobu Utsunomiya Line → Mibu / Kuniya / Omochanomachi / Yasuzuka

### By train

**Access 5**  
There are 4 of Tobu-Utsunomiya Line stations in Mibu. Please take the transportation according to your routes and destinations.

Asakusa → Tobu Sky Tree Line and Isezaki Line → Tobu dobutsuboken → Tochigi  
Tobu Utsunomiya Line → Mibu / Kuniya / Omochanomachi / Yasuzuka

### By Car

**Access 6**  
Kawaguchi JCT → Tohoku Expressway → Tochigi-Tsuga JCT → Kitakanto Expressway → Mibu IC

## Contact

**Mibu Tourism Association** (Inside the Mibu Town Hall)

3841-1 Oaza-Mibukou, Mibumachi, Shimotsuga-gun, Tochigi 321-0292

TEL: 0282-81-1844 FAX: 0282-82-1107

Website : <https://mibu-kankou.org/>

E-mail : [keizai@town.mibu.tochigi.jp](mailto:keizai@town.mibu.tochigi.jp)



# Mibu Feudal Lord & Princess Cuisine

## A Full-filling time

The food which the Torii clan feasted on during the Edo period has been recreated, 200 years later, based on their actual recipe book. The historically accurate menu incorporates a wide range of ingredients for healthy food with a touch of playfulness and plenty of style. Why not discover the history of Mibu through food?



**ODAKA -**  
Mibu no kuni Terroir French style full course



**Shunka -**  
Otonosama Miryoku Gozen



**Sansuitei -**  
Mibu Daimyo Gozen



**Hanamidori -**  
Mibu Onari Gozen



**Shino -**  
Mibu Sanmangoku no hanshu Gozen



**Kazama -**  
Mibu no Himegimizen



**Ishikawa -**  
Mibu Ohimesama Gozen



**Four Seasons Mibu -**  
Yuugao Hime Lunch



**Tamagawa Sushi -**  
Ohimesama Chirashi



**Kyouka -**  
Anmitsu Hime Set



**Mihana - Mibu no**  
Harumeku Tamatebako



**Mikado -**  
Princess a la mode

**M**agnificent

**I**mpressive

**B**eautiful

**U**nique

**Find your ideal MIBU trip**







# Museum

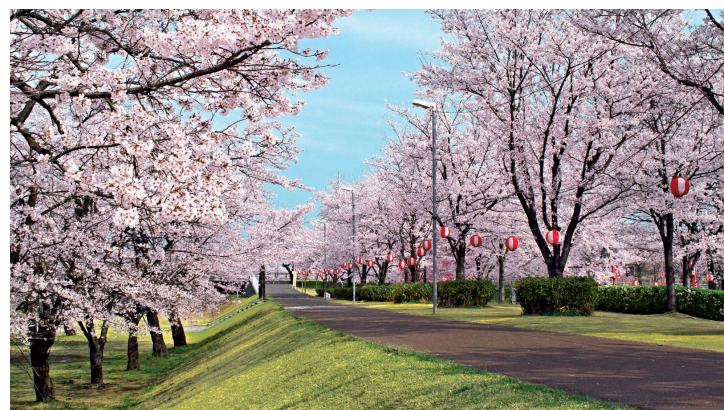
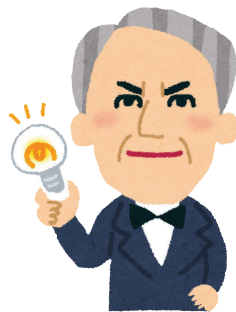
Smiles on grownups and children



## Omochanomachi Bandai Museum

Discover a world of toys that will mesmerize children and adults alike.

Divided into four areas, this museum's exhibits include an impressive collection of Gundam figures, as well as a selection of toys popular in modern Japan through the ages, bound to evoke nostalgia. There is also plenty more to see, including a collection of engine inventions of world class quality and a collection of rare antique toys received from the London Toy and Model Museum.



## Shinonome Park

Around the bridge, named "Shinonome" meaning "daybreak", 250 Yoshino cherry trees bloom brilliantly. The sight has been named as one of the top 100 most beautiful views in Tochigi.



## Mibu-Machi General Park

Full of water and greenery. Mibu-Machi General Park has a variety of athletic equipment, and the pond is full of languidly swimming koi. The plaza surrounded by water and greenery is the perfect place to relax.



## Mibu-Machi Toy Museum

Visitors to this museum can play with the toys.

In addition to the playground area Kids Land, where kids can engage in active play, the museum boasts a collection of roughly 9,000 items, from simple tin toy to the latest new toys. With a variety of special exhibitions and events held throughout the year, children and adults alike will be mesmerized.



# Park

A relaxing day off without worrying about time



## Tochigi Wanpaku Park

In addition to flowerbeds showcasing different flowers depending on the season, this park also features a large pond where visitors can enjoy canoeing and a large field. With indoor facilities such as Kodomo-no-shiro (the Kids' Castle) and Fushigi-no-fune (Mysterious Ship) as well as restaurants, you can have an enjoyable time without needing to prepare anything. Farming experiences and workshops are also on offer.



## Dokkyo Medical University Hospital Ginkgo Trees

The ginkgo approximately about 200 is planted in Dokkyo Medical University, the hospital main street by 550m. The trees turn a vibrant green in early summer and take on a golden hue from October to early November. The sidewalk becomes the yellow carpet and walks over fallen leaves and looks up at trees and can fully sense autumn bodily.



## A sightseeing spot as well as a place of rest in Mibu



## Mibu Highway Park.

Perfect for a break, a meal, or a place to pick up some local specialty goods. Joined with the Mibu Parking Area on the Kita Kanto Expre-ssway, it can also be accessed from the expressway.



## Mibu Strawberry Farm

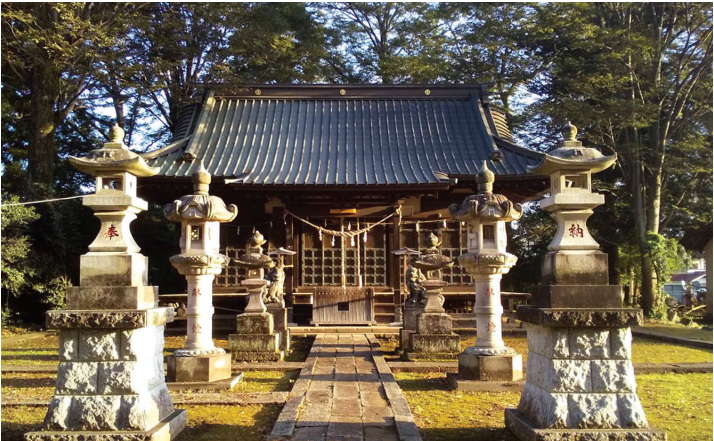
Late December - early June

Just outside Mibu Highway Park is Mibu Strawberry Farm where families can enjoy picking the most amazing local strawberries such as Tochiotome and Skyberries.



# History

Admire the culture and history of Mibu and enjoy a moment of relaxation.



Seichuu Shrine



Okoto Shrine



Koushou Temple



Jyoulaku Temple



Mibu Temple



Koukou Temple

In 1651, before the ashes of the third shogun of the Tokugawa dynasty, Tokugawa Iemitsu, were brought to Nikko, a wake was held at this temple. Decorated with the Tokugawa clan's hollyhock crest, the temple also houses the Buddhist mortuary tablet of Tokugawa Iemitsu.



Ninomaru Gate



Mibu-Machi Historical Folk Material Museum

A museum introducing the history and culture of Mibu. There is a permanent exhibition showcasing the colorful history and culture of Mibu which is open to the public.



Mibu-Machi Castle Ruins Park

Mibu Castle was built by the Mibu clan during the Muromachi period (1336-1573), and during the Edo period (1603-1868), the Tokugawa Shogun Families, stayed there when they visited Nikko Toshogu Shrine. The park encompasses the ruins of the castle keep, while the stone walls and moat have been reconstructed. The Edohigan cherry blossoms along the moat in spring are truly a sight to see.



Gojoin

(Commemorative stamp given to visitors to castles in Japan)

The Mibu Castle Gojoin is based on motifs of the castle's main gate and the Torii clan family crest. Why not pick one up as a memento from your visit to the Mibu-town?

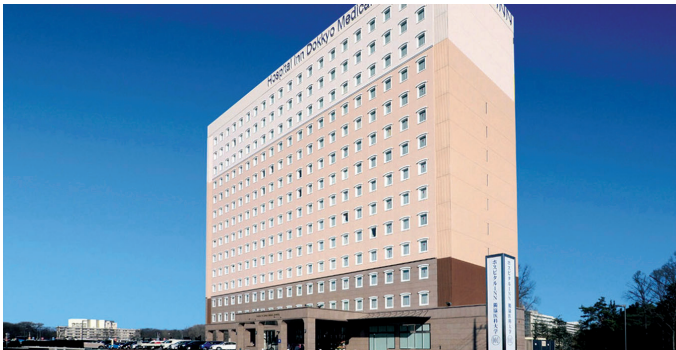
## Information

### Taxi



Mibu Sightseeing Taxi (Mibu Station)  
Midori Kotsu (Omochanomachi Station)  
Mibu Taxi (Mibu Station)  
Noguchi Taxi (Yasuzuka Station)

## Hotel



Hospital Inn Dokkyo Medical University (Omochanomachi Station)  
Business Hotel Ishimura (Omochanomachi Station)  
Mibu Green Hotel (Mibu Station)  
Hiroya Inn (Mibu Station)

## Bicycle Rental



Junior high school students and older : ¥400,  
elementary school students : ¥200



Koide Bicycle Rental (Mibu Station)  
Mibu Taxi (Mibu Station)  
Roadside Station Mibu Mirai-Kan



# Local Eats

You can feel the essence of Mibumachi's castle town with the feudal lords and princess souvenirs. We recommend them as personal souvenirs for enjoying at home as well as to give as gifts.



## Shogun's Strawberry Shaved Ice

Shaved ice made from 100% fully ripe strawberries grown in Tochigi, using no actual ice



## Mibu Hand-rolled Tea (Temomi Cha)



## Rongo Coffee



## Super Chestnut Steamed Yokan



## Zaru Tofu



## Indigo Seed Pudding

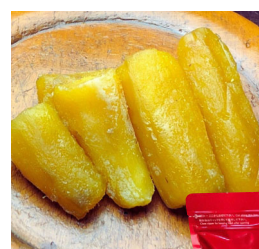


## The Princess' Treasure Box

Kanpyo (dried gourd strips) and bottle gourd fruits are arranged in a way that is easy to eat for people of all ages.



## Ichigo Daifuku



## Dried Sweet Potato



## Junmai Daiginjo Mibu



## Mibu-Machi Toy Museum Original Cookie

Eight popular spots at the Toy Museum and handprints of rock, scissors and paper are colorfully printed.

Not only are the cookies playful and delici-ous to eat, but you can also play rock-paper-scissors and a card game "concentration" with them. Museum knows how to have fun.



## Pickled Vegetables

You can also buy delicious Japanese pickles that have won top prizes in the pickles grand prix every year.



## Pure Rice Mibu Cake and Jelly

Made from high-quality Yamada Nishiki sake rice grown in Mibu.



## Mibu Feudal Lord Rice

# The four Seasons of Mibu



## Early April Shinonome Flower Festival

Held when the cherry blossom trees along the Kurokawa River are in full bloom, this festival draws crowds of both locals and visitors from outside the town. Shinonome Park serves as the venue, and various events take place there.



## Mid-August Mibu Furusato Festival

The sight of festival-goers performing Bon dance to music known as Kanpyo ondo is something you can only see in Mibu. The festival's grand finale is a fireworks display.



## Early to mid-July Yasaka Festival

The festival is dedicated to the Japanese deity Susanoo-no-Mikoto, and is held in order to wish for good health.

On Saturdays and Sundays during the festival period, Rangaku-dori street is temporarily closed off to vehicle traffic. With eight to nine mikoshi (portable shrines), ten street stalls all packed together, and contests, it's well worth checking out.



## Tochigi Wanpaku Park (Autumn)



## Shinonome Park (Winter)